

Exlar Specialty Motors And Actuators

Stainless Steel Housings

For applications requiring stainless steel construction and housings, Exlar offers that option with the SLM Series motors, SLG Series gearmotors, GSX Series linear actuators and the FT Series linear actuators.

- GSX dimensions will vary with options
- SLM and SLG motors dimensionally equal to catalog standard
- IP65 sealing standard, custom sealing available
- Custom designs available including special shafts, seals, mountings, connectors, wiring and more.



All Stainless Steel
GSX20 Linear Actuator

FT Series Inline with SLG115
All Stainless Steel Construction



Also Available – Food Grade Coatings

Food processing applications regularly require resistance to harsh wash-down chemicals.

The actuators shown right feature food-grade white epoxy coatings. FT Series linear actuators can be manufactured with several options for food production applications such as sealing of the end cover, sealing of the motor face to the motor plate, and food-grade epoxy coating or all stainless steel construction for the actuator and the motor.

Food-grade SLG Series gearmotors are mounted to the FT Series actuators as also shown right.

Exlar will work with you to tailor a solution specifically engineered for your application.



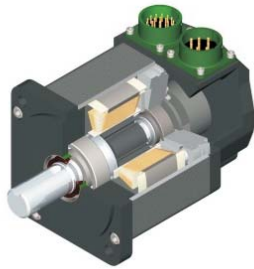
FT35 with SLG90
Food Grade Epoxy Coated,
Stainless Steel Motor Mounting Plate



FT60 with SLG115
Food Grade Epoxy Coated,
Stainless Steel Motor Plate

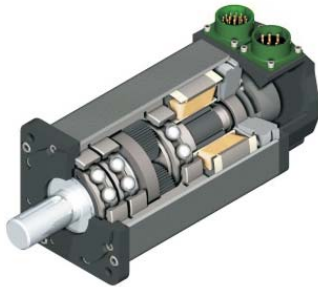
EXLAR

Standard Specifications



Stainless SLM Series Motor

Model	Frame (mm)	Maximum Rated Cont. Torque (lbf-in)	Base Speed (rpm)
SLM060	60	13	5000
SLM090	90	50	4000
SLM115	115	150	3000
SLM142	142	200	2400



Stainless SLG Series Gearmotor

Model	Frame (mm)	Gear Ratios	Max Output Torque (lbf-in)	Max Speed (rpm 4:1)
SLG060	60	4:1, 5:1, 10:1	340	1250
SLG090	90	16:1, 20:1, 25:1	1550	1000
SLG115	115	40:1, 50:1, 100:1	2900	750



Stainless GSX Series Linear Actuator

Model	Frame (in)	Strokes (in)	Max Cont. Force (lbf)	Peak Force (lbf)	Max Speed (in/sec)
GSX20	2	3, 6, 12, 18	490	1200	33
GSX30	3	3, 5.9, 10, 12 14, 18, 24	1145	1800	25
GSX40	4	6, 8, 12, 18, 24	3370	5400	25



Stainless FT Series Linear Actuator

Model	Frame (in)	Strokes (in)	Max Force (lbf)	Max Speed (in/sec)
FT35	3.5	6, 12, 18 24, 36, 48	4000	60
FT60	6	12, 24 36, 48	20,000	39
FT80	8	12, 24, 36, 48	40,000	34

